

New Products Introduction



Products Introduction of Excavators

XE45U



Main Parameter Configuration

- Operating weight: 4800 kg/10582 lb
- Engine Rated Power: 29.7 kw/39.8 hp/2200 rpm
- Bucket capacity: 0.12 m³/0.16 yd³
- Bucket digging force: 38.2KN/8588 lbf
- Arm digging force: 22KN/4946 lbf

Applications

- Widely used in municipality construction, road and bridge infrastructure and landscaping.

Product Highlights

- Large bucket outward angle;
- One/dual way pipeline with adjustable flow and pressure;
- Electrically controlled pump with load sensing hydraulics meet demand for various attachment;
- Extra weight, rear camera, angle blade available;

Products Introduction of Excavators

Item	Specs		Item	Specs	
Engine	Make	Kubota D1803 Turbo	Fluid Capacity	Fuel tank capacity L/gal	65/17
	Power power kW(hp)/rpm	29.7(39.8)/2200		Hydraulic tank capacity L/gal	36/9.5
	Torque/Speed N·m(lbf·ft)/rpm	150.5(111)/1500	Undercarriage	Width of shoe mm/in	350/14
Main performance	Travel speed (H/L)	5.0/2.6(3.1/1.6)	Dimensions	Height mm/ft	2649/8'8"
	Rotating speed	9		Length mm/ft	5250/17'3"
	Maximum rotating torque kN·m/lbf·ft	8.7/6417		Width mm/ft	1850/6'1"
	Gradeability	30° (58%)		Track length mm/ft	2249/7'5"
	Ground pressure kPa/psi	34/4.9		Track length on ground mm/ft	1800/5'11"
	(ISO) Bucket digging force KN/lbf	38.2/8588		Crawler gauge mm/ft	1500/4'11"
	(ISO) Arm digging force KN/lbf	22/4946		Min. tail swing radius mm/ft	1215/4' extra weight 1320/4'4"
	Maximum traction KN/lbf	42/9442	Working range	Max. digging reach mm/ft	5715/18'9"
Hydraulic system	Max flow of main system L(gal)/min	132/34.9		Max. digging height mm/ft	5479/18'
	Pressure of main system Mpa/psi	24/3480		Max. dumping height mm/ft	4052/13'4"
	Pressure of travel system Mpa/psi	24/3480		Max. vertical wall digging depth mm/ft	2680/8'10"
	Pressure of swing system Mpa/psi	20.6/2988		Max. digging depth mm/ft	3342/11'
VAB	Boom offset (Left)	70°		Min. swing radius mm/ft	1215/4'
	Boom offset (Right)	53°		Maximum dozer lifting height mm/ft	417/16"
				Maximum dozer cutting depth mm/ft	513/20"

Products Introduction of Excavators

Safety-XE45U:



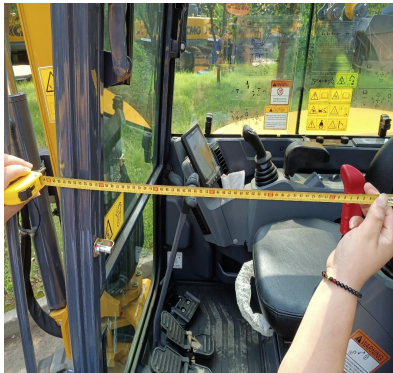
Cab ROPS&OPG
certification



Wide frame skeleton
structure



Optional rear camera



Large entrance
and spacious cab



LED lights and roof
lights



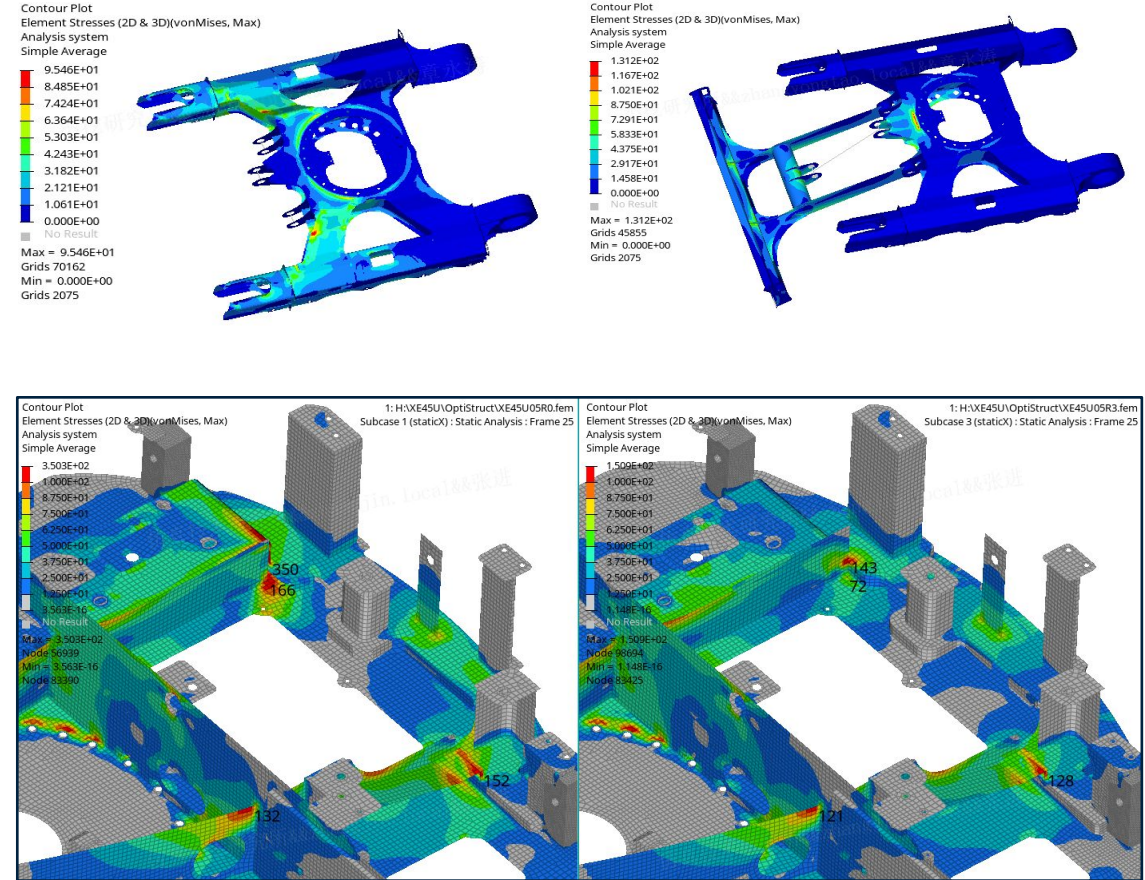
Emergency stop
switch

- High-strength steel one-piece stamping molding, **excellent impact resistance, bending and twisting resistance**; Satisfy the requirements of anti-roll over and anti-falling object safety protection structure.
- One-piece wide frame skeleton structure, small operating blind spot, safer construction;
- Large entrance and emergency stop switch;
- Newly designed high-strength handrail, pipe diameter thickening, **to ensure the safety of the machine**;
- All LED lights, standard with roof lights and electronic buzzer, night construction is safer;
- Optional right camera, the monitor can realize scene switching, make the operation and transfer safer.

Products Introduction of Excavators

Reliability-XE45U:

- The simulation experiments of the turntable and undercarriage have shown that all stress indicators meet the design requirements, and the structure is safe and reliable.
- Tested lifting capacity, which meets the design requirements and can complete heavy lifting operations.



Products Introduction of Excavators

Economical efficiency-XE45U

- Customize low-speed high torque Kubota D1803 engine, achieve precise matching with hydraulic system, optimize fuel consumption rate, and reduce fuel consumption by more than 5% under the same working conditions..
- DPF regen: passive regeneration, active automatic regeneration, parking active regeneration (parking regeneration) to ensure emissions, self repair, and improve environmental efficiency;
- High flow dual filtration system, the impurity content entering the engine can be effectively reduced, the intake is efficient, the engine combustion is complete, the engine efficiency is high, and clean, dry, and sufficient air is provided for combustion within an acceptable temperature range.
- **Fuel consumption (where loading is a continuous operation with no waiting)**

Model	Bucket capacity	Fuel cost (L/gal/H)	Loading efficiency (m³/yd³/H)
XE45U	0.11m³ /0.14 yd³ dig bucket	6.18/1.6	
Note: The fuel consumption and efficiency values are tested by factory professional testers in specific environments, and the specific fuel consumption is subject to market vehicles.			

Products Introduction of Excavators

Fine control-XE45U:



Lifting test



Lifting test

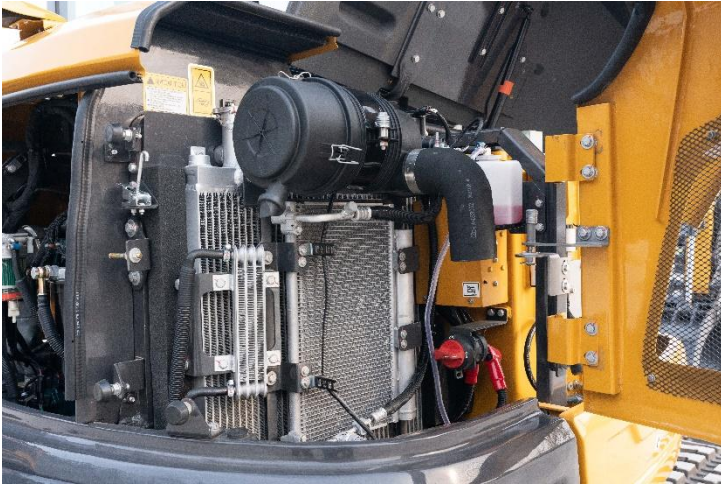


Heavy load compound operations

- XE45U can meet the requirements of smooth and flexible composite action, stable, reliable and safe lifting. The extended bulldozer combined with the quick coupler can meet the special working conditions of digging from the bucket to the bulldozer shovel. The main valve spool is optimized, and the heavy bucket is coordinated and smooth on flat ground.

Products Introduction of Excavators

Maintenance Convenience-XE45U:



- Air filter, water radiator and oil radiator are arranged on the left side of the machine, hydraulic and oil filters are on the right side, **large operating space and convenient maintenance.**



- The right hood adopts a fully open design, making it easy to inspect and maintain the radiator, fuel tank, main valve, and various solenoid valves at a glance

Products Introduction of Excavators

Adaptable to working conditions-XE45U:

- **Work mode customization settings:**

Multiple custom modes such as breaking and multiple attachment are available for selection, with stronger adaptability to working conditions.

- **Safety features:**

Set password protection function according to different user needs; DPF blockage can be regenerated and repaired; Optional power limit alarm setting.

- **Monitoring working status:**

During machine operation, important information such as engine speed, engine water temperature, fuel level, hydraulic oil temperature, system voltage, LS oil pressure, DPF status, etc. are monitored.



Products Introduction of Excavators

Operator comfort-XE45U:



- Enlarged cab, increased space by 5%, and all buttons within reach;
- High configurations, including cup holder, backup power supply, USB port, etc



- Large size seat, widened/lengthened by 8% in length, with backrest angle adjusted to 10 °
- Dual stage absorption reduces seat vibration by 50%



- Joysticks operation force increases by 10%



- Irregular foot pedals increase foot fit by 15%
- Curved corrugated foot pad, anti slip and wear-resistant



- Powerful auto AC, with a 25% increase in air volume and a 20% increase in cooling effect



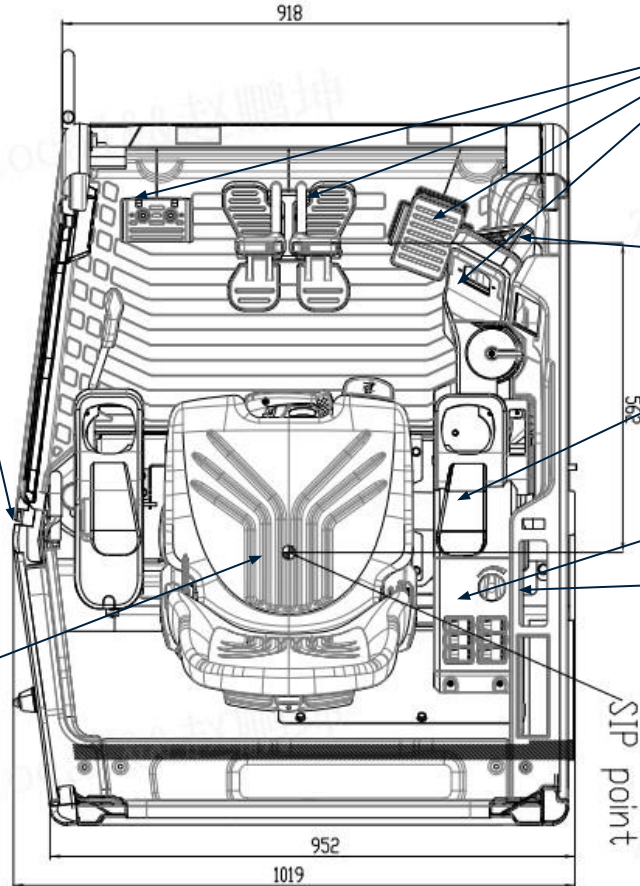
- Three dimensional surround air supply
- Sealed positive pressure cab reduces noise by 1.5 decibels

Products Introduction of Excavators

Operator comfort-XE45U:

- V shape cab
increase entrance
by 13%, internal
space by 9%;

- Mechanical
suspension seat



- 7 inch high resolution screen will comprehensive
machine info and setting;
- Left side foot rest, right side Angle boom padel and
be locked and used as foot rest;
- Small range travel pedals save space;
- Wiper motor and auxiliary fluid tank are hidden to
save cab space;
- Adjustable arm rest ;
- Control penal integrated in the arm rest box;

Products Introduction of Excavators

XCMG Attachments:

Hydraulic
quick coupler



Hydraulic
thumb



hammer



Timber grab



Hydraulic
shear



scrap shear



orange
peel grab



Remarks: Standard with single and two-way pipeline, attachments rotation pipeline, coupler pipeline, equip as needed.



 **SOLID TO SUCCEED**